
vSEC:CMS K-series user license v3.0

Brand: Versasec

Product Code: SMAV100MSC-K3.0



Short Description

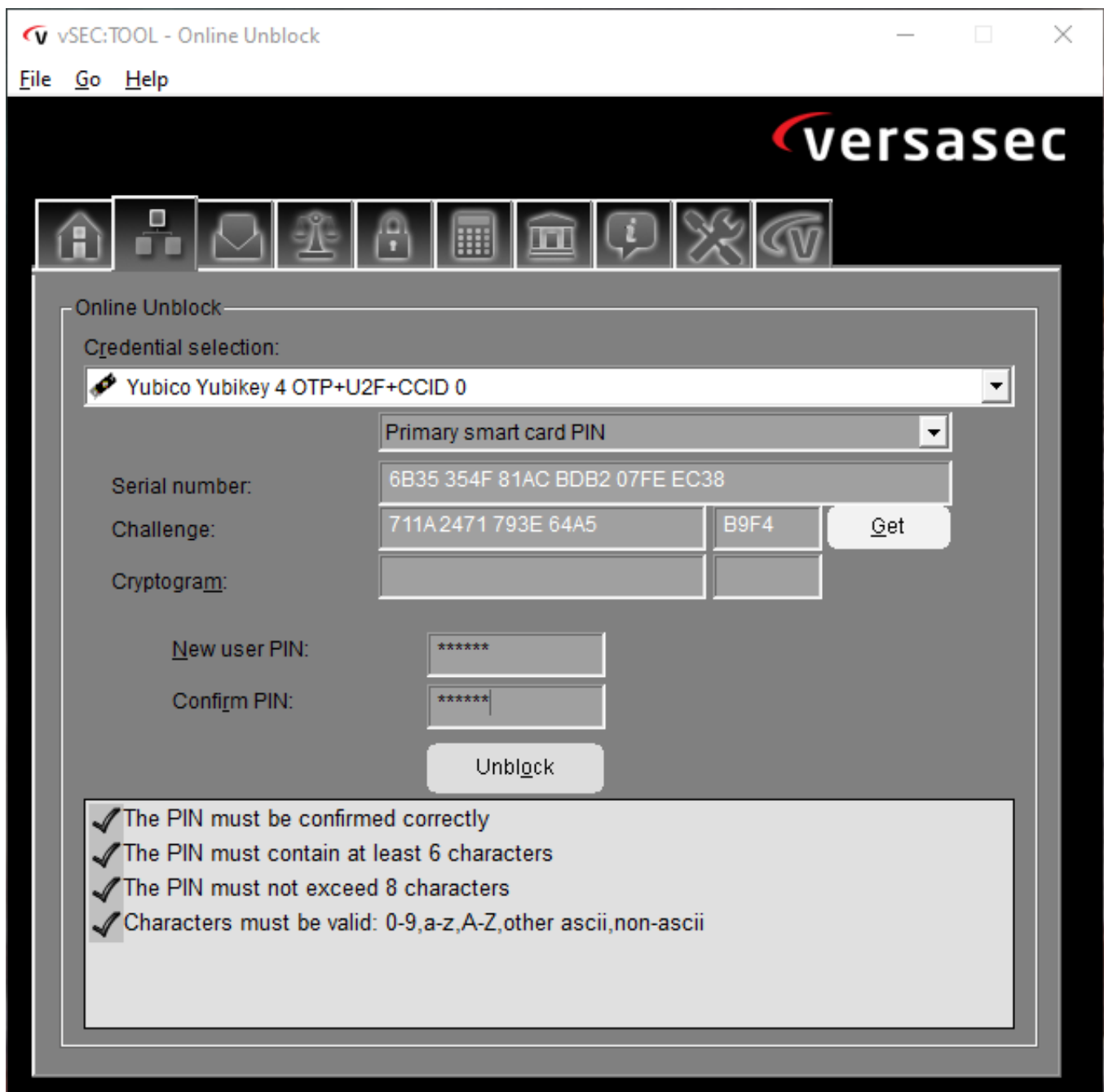
vSEC:TOOL K3.0 is the PKI and smart card experts' favorite tool. It provides a hassle-free option to evaluate your PKI credential rollout plan

Description

The Expert's Smart Card Tool

vSEC:TOOL K3.0 is the only minidriver smart card tool you'll ever need. The application has all the rich smart card management features required such as:

- Online and offline PIN unblock
- Smart card PIN policy manager
- Graphical PIN policy validation during PIN change
- Admin key management with several calculation options
- Advanced certificate/key functions
- Detailed smart card information
- Detailed documentation (online help)



Product News

vSEC:TOOL K3.0 is now available

New in version 3.0

- Updated graphical user interface
- Support for Microsoft Windows 10
- New online help documentation
- Updated list of supported credentials

Supported Smart Cards

The table below is showing the smart cards supported by vSEC:TOOL

If you are using a credential that is not on the list, please contact info@smartjac.com to check if and when your credential will be supported.

- ACS ACOS5-64
- ACS CryptoMate64
- Athena CNS
- Athena IDProtect Key Nano USB
- Athena IDProtect Key USB Token
- Athena IDProtect Smart Card
- Aventura MyEID 4.5
- Avtor CryptoCard 337
- CardOS 4.4
- CardOS 5.3
- Cryptovision ePKI Applet
- Key-ID PKI
- Feitian ePass FIDO-NFC
- Feitian BioPass FIDO2
- Feitian eJava Token
- Feitian SmartCard
- Feitian ePass2003
- Thales IDPrime .NET 510
- Thales IDPrime .NET 5500
- Thales IDPrime MD 830
- Thales IDPrime MD 840
- Thales IDPrime MD 930
- Thales IDPrime MD 940
- Thales IDPrime MD 3810
- Thales IDPrime MD 3840
- Thales IDPrime MD 3930
- Thales IDPrime MD 3940
- Thales IDPrime MD 3940 FIDO
- Thales IDPrime PIV 2.1
- Thales IDPrime PIV 3.0
- Thales IDPrime Virtual
- Thales MultiApp ID
- Thales Safenet eToken 5110
- Thales Safenet eToken 5110 FIPS
- Thales Safenet eToken 5300
- HID Global Crescendo C200
- HID Global Crescendo C1150

- Identiv uTrust MD
- Longmai mToken CryptoID
- Microsoft minidriver enabled devices
- Microsoft Windows Hello for Business
- Mifare DESFIRE EV1
- Idemia ypsID S2
- Idemia ypsID S3
- Idemia Authentic
- Idemia IAS ECC
- Idemia PIV 8.1
- Open FIPS 201 Applet
- Raak Technologies C2
- SafeTrust-PIV on Placard
- Taglio C2
- Taglio PIVKey
- TCOS TeleSec IDKey
- Virtual Smart Cards
- Yubico YubiKey 5 NFC/5C/5 Nano/5C Nano
- Yubico YubiKey 4/4 Nano/4C/4C Nano
- Yubico YubiKey NEO/NEO-n