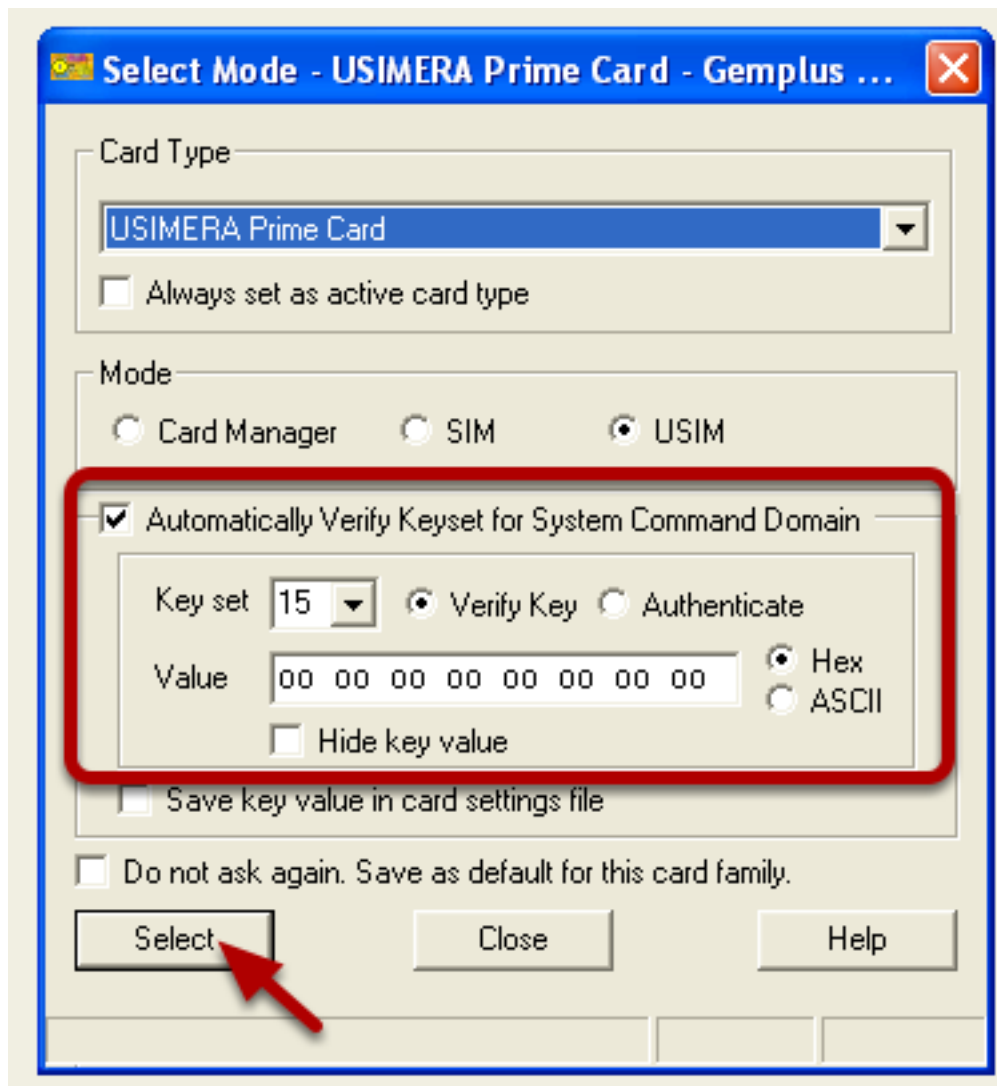


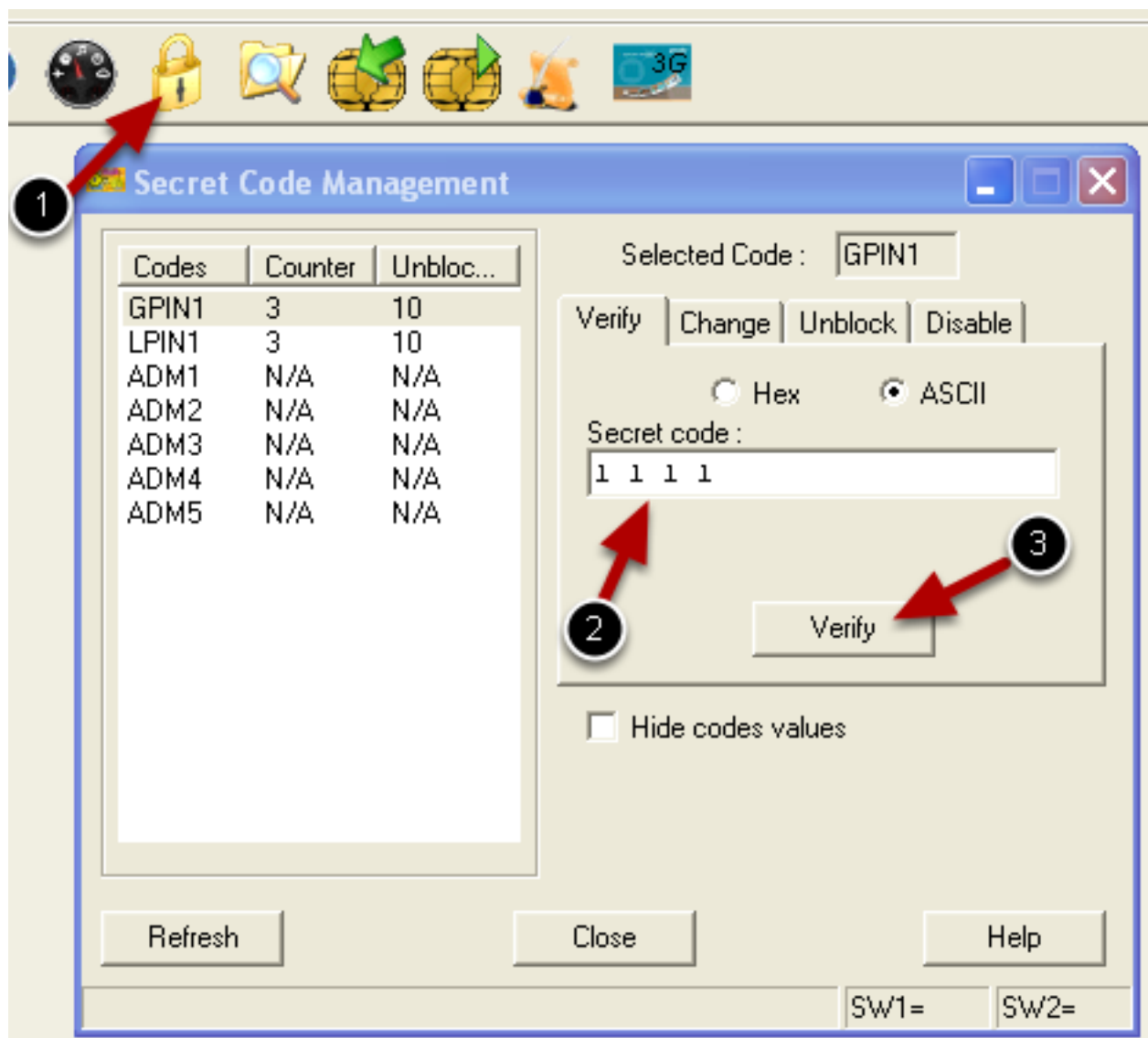
Editing ISIM on Usimera Prime cards

Select Mode



Insert the card into the card reader and a window will pop up called Select Mode. Verify the Keyset and click Select.

Verify secret codes

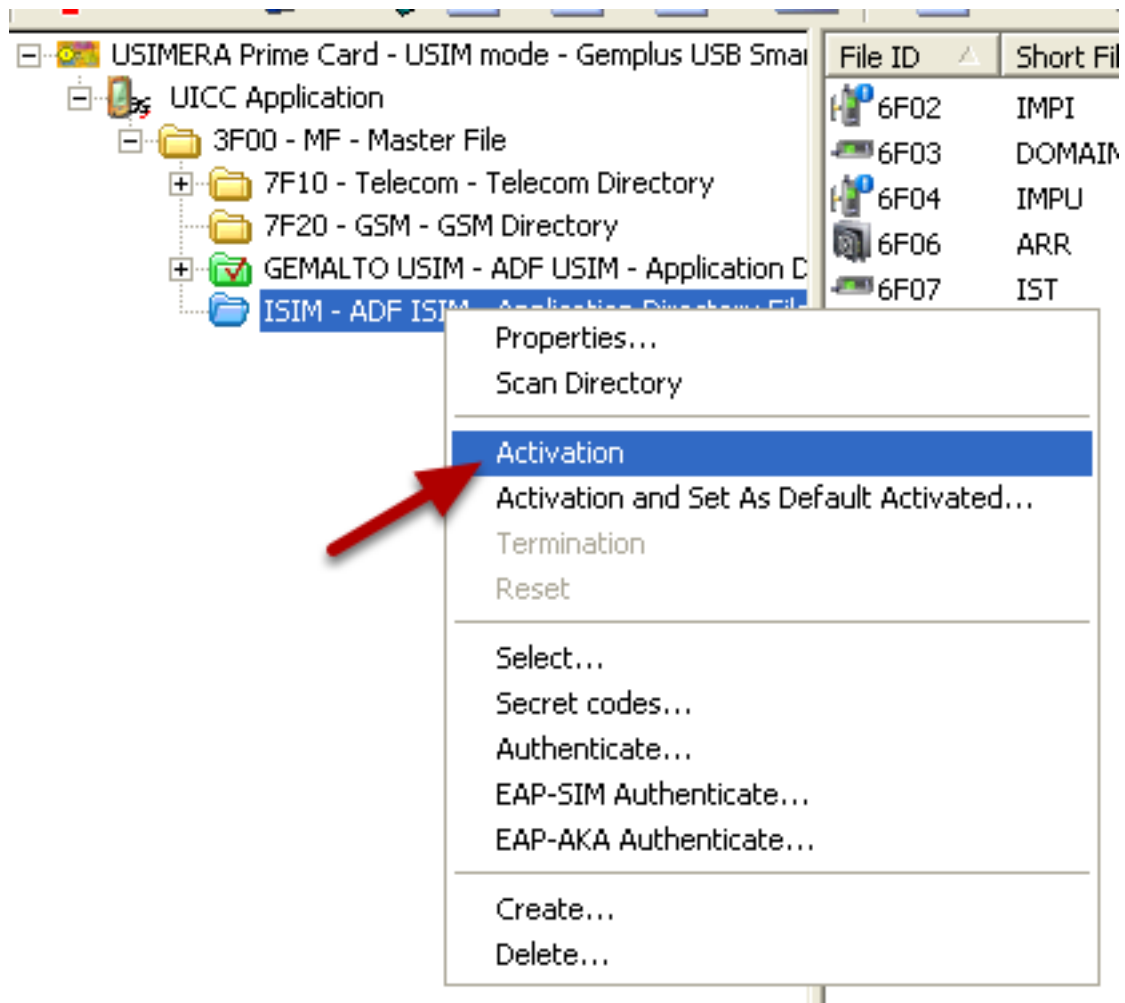


Click the lock symbol at the top of the screen and verify the secret codes.

GPIN1: 1111

LPIN2: 2222

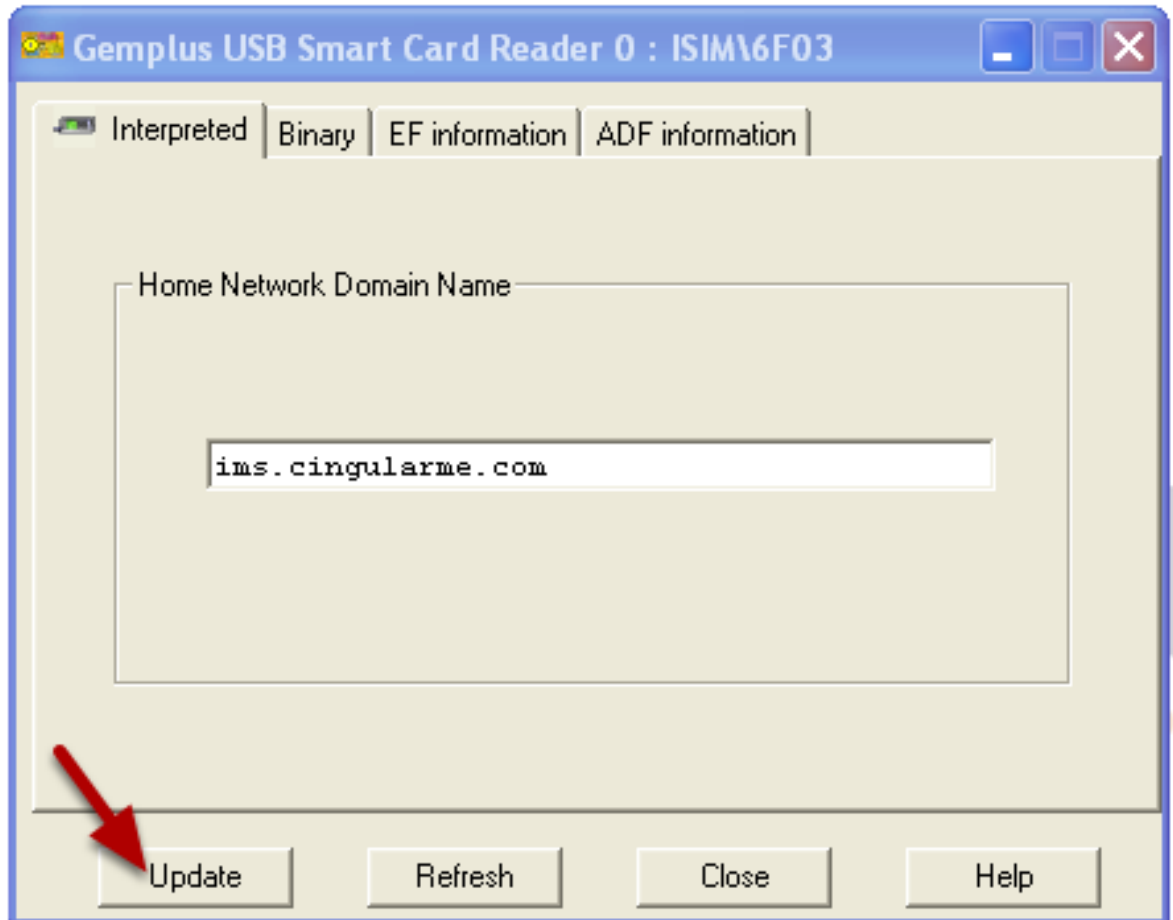
Activate ISIM



Expand the file tree and right click ISIM.
Now click Activation.

Open files and edit

File ID	Short File Name	Long File Name	File Size	File Structure	SFI	EF ARR ID	SE01
6F02	IMPI	IMS private user identity	149 B	Transparent	02	6F06	
6F03	DOMAIN	Home Network Domain Name	50 B	Transparent	05	6F06	
6F04	IMPU	IMS public user identity	750 B	Linear-fixed	04	6F06	
6F06	ARR	Access Rule Reference	320 B	Linear-fixed	06	6F06	
6F07	IST	ISIM Service Table	1 B	Transparent	07	6F06	
6FAD	AD	Administrative Data	3 B	Transparent	03	6F06	
6FD5	GBABP						
6FD7	GBANL						



Open the file you want to edit, enter in your information and then click update.
DONE!